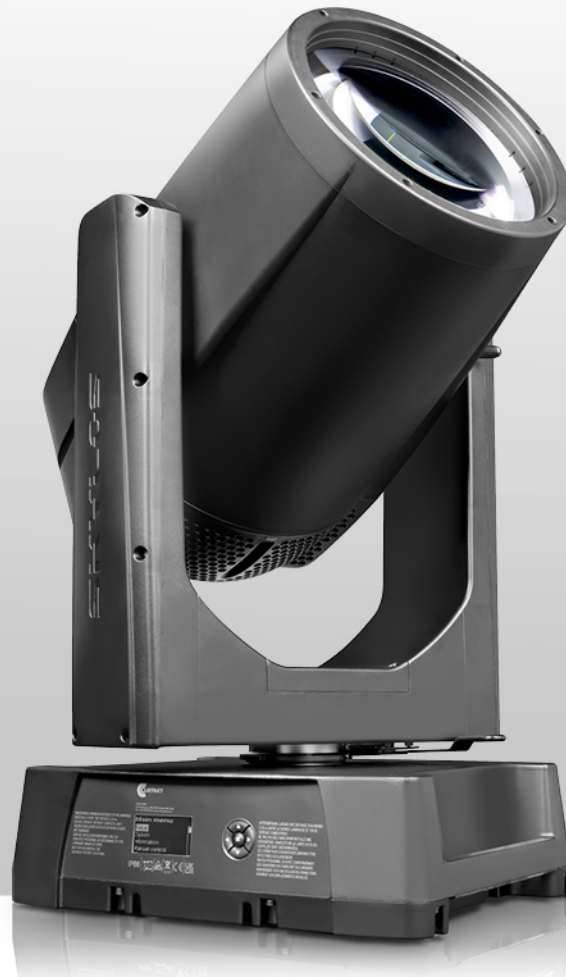


# SKYLOS

**ULTRA-VERSATILE AND WEATHER-RESISTANT, WITH INCREDIBLE LIGHT OUTPUT AND OUTSTANDING CONSTRUCTION FEATURES: MUCH MORE THAN JUST A CLASSIC SEARCHLIGHT!**

- **Light Source:**  
Custom 300W white laser engine
- **Output:**  
>250 Mcd
- **Zoom Range:**  
0.5° to 5° (10:1) linear edge
- **Shield Family:**  
Moving head fixture compatible for outdoors (IP66)
- **CloudIO Ready:**  
Fully compatible with CloudIO



Large searchlights have written one of the most glorious pages in the history of professional show lighting. Yet today they are considered unviable since many firms are not open to investing in a technology that often has weight, size, operating cost and maintenance drawbacks.

Claypaky's **SKYLOS** aims to quash these uncertainties and comes with a long list of features and performance specs that make it much more than just a sim-

ple searchlight. The Skylos is an extremely versatile fixture in every way, which will certainly also be appreciated in the touring sector, where LDs are constantly on the look-out for dense, solid beams of light and ever-greater light output.

The Skylos fits a **custom 300W white light laser source**, which provides an extremely parallel, uniform beam, while attenuating the well-known temperature and safety issues found with units that use Xenon lamps.



## HIGHLY ADVANCED OPTICS

Considering the light output, its power consumption is not even close to that of traditional searchlights. With a max power consumption of 900W, the Skylos has the same light output as a 4000-watt Xenon lamp!

The beam pours out from a **large 300 mm front lens**, specifically designed in Claypaky's R&D department. In combination with the light source, it produces a dense, full-bodied column of light, which is highly visible even from afar. The beam is perfectly uniform and parallel, with no visible hotspots. The beam angle can be adjusted **from 0.5° to 5°** resulting in exceptional light intensity, which cannot be produced by a LED or traditional light source.



November 2023 - Subject to change without notification



## OUTSTANDING “BEAM” EFFECTS

Its range of effects includes a slot for **customizable gobos** and a **battery of prisms**, which distinguishes it from other fixtures. On one wheel, we find a **rotating six-sided prism** and a **rotating five-sided linear prism**. And on a second level, we find a **fixed 4-sided prism**, which can be superimposed on the other two to achieve a breath-taking **Moonflower effect** and many other fantastic never-seen-before mid-air effects. Laser technology adds outstanding optical contrast, making all light projections razor-sharp.

Other Skylos features include a **15-color wheel**, with color filters designed to preserve and optimize the high brightness

of the light beam, a **5° frost filter** for a soft edge effect which can be used in various applications, a **24-bit digital dimmer** and a digital stop-strobe effect.

If you consider its light output and the size of the front lens, the body of this remarkable light is **lightweight and compact**. This allows the unit both to be moved with relative ease in any environment, and to be rigged on trusses for use on tours.

Its compactness also makes for **fast pan and tilt movements**, perfect for live shows. It is truly worlds apart from the slow, elephantine movements of many of its predecessors!

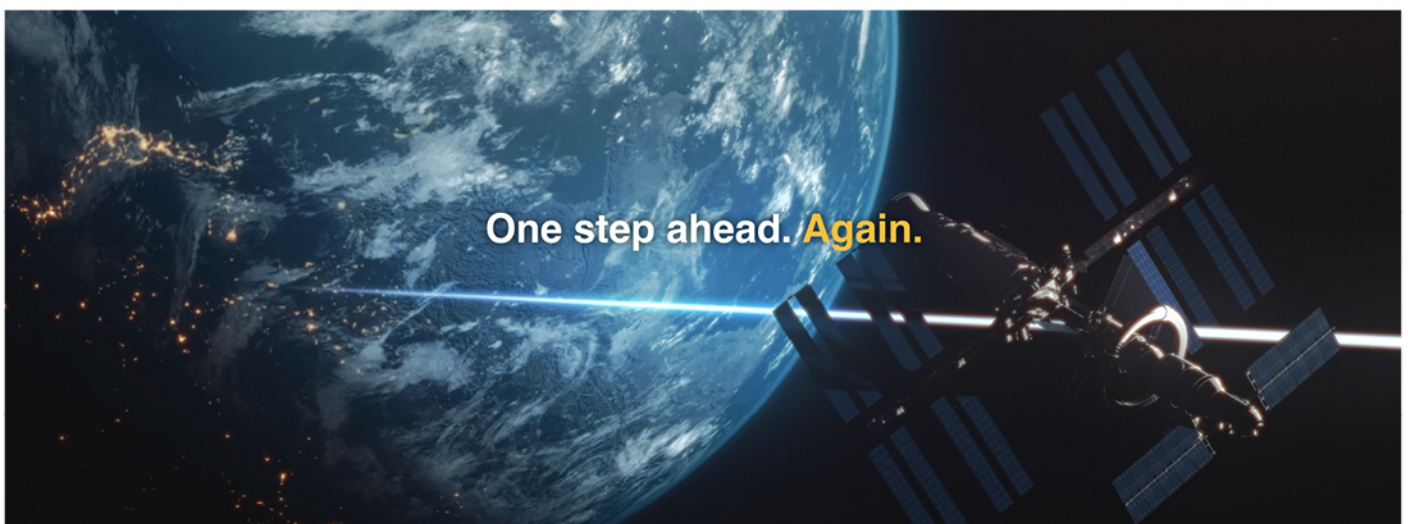
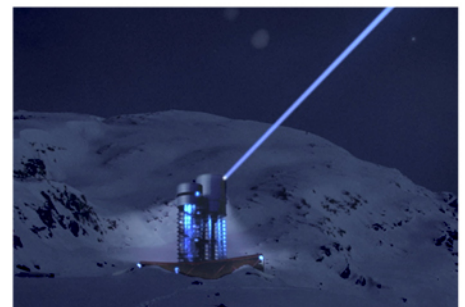
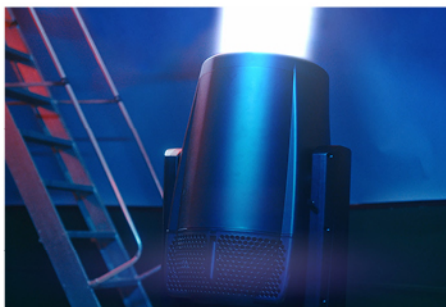


**IN ANY WEATHER CONDITION**

Its body is **IP66 protection rated** and **marine grade**. So is capable of working in any weather conditions and in environments with high marine salinity and a high risk of corrosion. A sophisticated internal heating system designed specifically for this product means it can **even work at very low temperatures (as low as -40°C / -40°F)**.

The Skylos goes far beyond the legacy of classic searchlights, and opens up unexplored market opportunities. It is the ideal light for every environment and field of use, from touring and large events to theme parks and fixed installations, thanks to its innovative, perfectly safe light source, top-notch performance with low power consumption, very low maintenance requirements, and specially designed body which makes it suitable for use in even the most extreme conditions.

*Pictures from Skylos' Video Teaser*



November 2023 - Subject to change without notification

# SKYLOS

## MAIN FEATURES

---

- Light source: custom 300W white laser engine
- Output: >250 Mcd
- 300-mm diameter front lens, consisting of high quality, tempered glass lenses
- Perfect beam collimation and uniformity
- 0.5° to 5° (10:1) linear edge
- 15-color wheel
- One slot for custom fixed gobo
- Rotating 6-sided + 5-sided linear prisms on a wheel
- Fixed 4-sided prism on a second layer, which overlaps with the other two in order to create a Moonflower effect
- 5° frost filter
- 24-bit digital dimmer
- Digital stop-strobe effect
- Control protocol: DMX, Art-Net, RDM, sACN
- CloudIO ready: fully compatible with CloudIO
- Operating voltage: 100-240V, 50/60 Hz
- Max power consumption: 900W
- Weight: 59 kg (130 lbs)
- Size: 480 x 399 x 923 mm (20.1 x 12.3 x 31.5 in)
- IP66 and marine grade protection rating
- Internal heating system (-40°C to +45°C working temperature)

