

# Tambora Linear

## PAINT A NEW PICTURE! A VERSATILE NEW HYBRID LED BAR ALLOWING YOU TO PAINT STUNNING SPACE AGE PIXEL ART EFFECTS

- **Light Source:**

400 RGB LEDs + a line of white strobe (Tambora Linear 100)  
240 RGB LEDs + a line of white strobe (Tambora Linear 60)

- **Zoom Range:**

120° aperture

- **CloudIO Ready:**

Fully compatible with CloudIO



Following on from its successful range of LED bars introduced last year, Claypaky has now expanded the Tambora family further and introduces **TAMBORA LINEAR**, an **advanced line of static LED Pixel mapping bars designed for versatile lighting effects and artistic set decoration.**

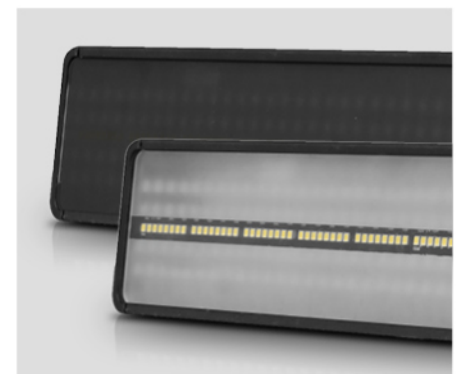
The Tambora Linear 100 and the Tambora Linear 60 are **hybrid bars**, which incorporate two complementary effects into one fixture. The first is driven by a system of **400 RGB pixel LEDs (240 for the Tambora Linear 60)**, which offer a background light very similar to that of a high definition LED wall in appearance. This LED array can be controlled as 16 LEDs in 25 or 15 groups to provide high quality motion graphics.

The second effect is created by a **central line of 200 extremely powerful white LEDs (120 for the Tambora Linear 60)** for an **overwhelming strobe effect**, capable of reproducing the behavior of the most celebrated strobe fixtures on the market. This effect can also be

controlled through 25 or 15 different areas, offering unparalleled versatility. All graphic content can be managed through the **Advanced Layers Management**, an exclusive feature of Claypaky LED bars, with which you can choose to use different levels of effects simultaneously, giving free expression to your creativity.

Tambora Linear features a large number of **build-in effects**, so it can be used not only in advanced mode but also in a simple mode for whenever a media server is not available, or the installation requires a speedy solution. The Tambora Linear can be easily connected mechanically with multiple units and then operated as one complete fixture from the control software. This is extremely easy and user friendly to use. For greater compositional modularity we also offer **TAMBORA LINEAR 60**, a compact model particularly suitable for applications in narrow environments. Claypaky also offers a **wide range of easy-to-apply accessory filters**. These can shape the beam of light with a frost effect or increase the readability of the pixels with the “neutral density”

filter, which is particularly useful for television applications and really enhances the on-camera performance. Tambora Linear is both sleek and lightweight and has been designed with a slim body, in order to better adapt to many applications. from TV



studios to touring, where the need for pixel mapping light sets is increasingly in demand and appreciated. The “hybrid” nature of Tambora is perfect for this need and provides a two in one versatility. This is a truly distinctive product within each lighting set, at a truly competitive price.

## MAIN FEATURES

---

- Static Hybrid Linear bar: graphical strobe and background colors
- Light source:
  - TAMBORA LINEAR 100: RGB LEDs and one line of white strobe
    - 400pcs 3-in-1 RGB LEDs, 4X4pcs in each area, 25 areas in total
    - 200pcs white LEDs, 8pcs/area, 25 areas in total
  - TAMBORA LINEAR 60: RGB LEDs and one line of white strobe
    - 240pcs 3-in-1 RGB LEDs, 4X4pcs in each area, 15 areas in total
    - 120pcs white LEDs, 8pcs/area, 15 areas in total
- Advanced Layer Management (Color - Internal Shape - Pixel Mapping)
- 120° Aperture
- Electronic linear dimmer, 24 bit and 5 curves
- Electronic strobe @25 f/sec
- Control signal: USITT DMX 512
- Protocols: RDM, WebServer, Art-Net, sACN and Kling-net
- White CT emulation 2500-8000K
- Enhanced electronic engine for dynamic beam pattern design, with digital accuracy and repeatability
- Basic engine: 9/13/23/27/31 channels
- Pixel engine:
  - TAMBORA LINEAR 100: 75 channels
  - TAMBORA LINEAR 60: 45 channels
- White strobe:
  - TAMBORA LINEAR 100: 25 channels
  - TAMBORA LINEAR 60: 15 channels
- 4 Operating modes: Constant - Auto - Silent - Theatre
- Input Power:
  - TAMBORA LINEAR 100: 700 VA@230Vac 50Hz
  - TAMBORA LINEAR 60: 420 VA@230Vac 50Hz
- CloudIO Ready: fully compatible with CloudIO
- Dimensions:
  - TAMBORA LINEAR 100: 1 mt length
  - TAMBORA LINEAR 60: 60 cm length
- Weight:
  - TAMBORA LINEAR 100: 5.7 kg (10.4 lbs)
  - TAMBORA LINEAR 60: 3.4 kg (7.5 lbs)
- Optional accessories:
  - Frost filter 20° or 30°, with no impact on the strobe effect
  - Neutral density filter (black filter) for television applications (-30% brightness)
  - Floor mounting with possibility of quick clamp coupling and slot for omega B positioning
  - Omega B to facilitate hanging
- Accessories supplied:
  - Carrying handle
  - Omega bracket
  - Powercon true1