

*In today's professional show lighting world, the need to optimize the number of lights installed on rigs is becoming ever greater. The goal is not just to reduce energy consumption but, more generally, to reduce the costs that stem from the complexity of the system. One solution is to use versatile fixtures, which are able to perform multiple functions. This is why the "hybrid light" category came about. These lights combine the ability to project visual effects with wash or beam light functions. However, building a "light that can do anything" is a big technical challenge, and was considered impossible for many years. This can be seen from the hybrid lights that became available on the market: compromises had to be made in one or more of their functions, which lighting designers are not always willing to accept.*



**SCENIUS  
UNICO**

# SCENIUS UNICO



## MULTIFUNCTIONAL WITH NO COMPROMISE

The masterly skills in the fields of optics and micro-mechanics has allowed Claypaky to take on the challenge without - as is our norm - giving in to compromise, and today we can proudly present a really special multifunctional light: the SCENIUS UNICO.

The Scenius Unico is the latest addition to the Scenius family. Therefore, its first highly appealing feature is the quality of its light, regardless of the use mode. Like the other Scenius models, it fits a 1400 Watt 6500K

Osram lamp, with a wide color spectrum and very high CRI. Its CMY system with linear CTO and wheel with seven selected colors produce a rich palette of colors of all shades, as needed for professional applications.

The Scenius Unico is first of all a magnificent spot light for projecting effects, with 6 rotating gobos and a beautiful animation wheel, which brings out the fixture's optical perfection. It is also equipped with the most sophisticated and most pre-

cise framing system on the market today, the same one as found in the Scenius Profile, which won the Award for Innovation at Plasa 2016.

The Scenius Unico is also an excellent wash light, since it features a system with different grade diffusion filters, which may be inserted gradually. They progressively soften the light beam and distribute the light uniformly, minimizing the loss in brightness. Wash mode is also excellent in combination with the framing system.

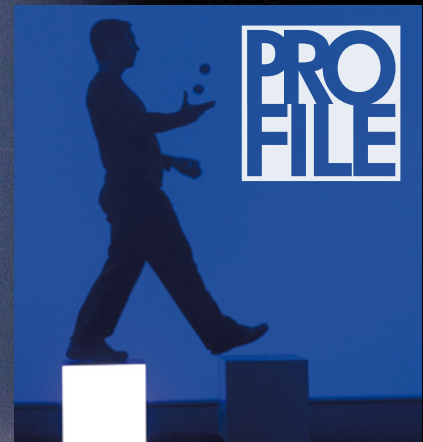
However the most amazing feature is that the Scenius Unico can also generate a powerful narrow beam of super concentrated light, with a minimum beam angle of only 5 degrees. This beam is highly visible even hundreds of yards away since the light leaves the fixture through a 180 mm (7 inch) diameter PC lens. Moreover, you can reduce the size of the beam with a high precision sixteen-blade iris. Thanks to these features, the Scenius Unico produces exceptional aerial effects with both narrow and fat parallel beams.

The Scenius Unico's zoom allows

beam angles ranging from 5° up to a maximum of 55°, with a slow or very fast linear excursion and exclusive fo-

cus tracking system. The numerous built-in effects cut through the air with great success even at the maximum beam angle. An excellent 16-bit dimmer completes this brand new light's features.

This is the Scenius Unico: Claypaky's powerful top-of-the-range fixture which combines extraordinary light quality with unequalled versatility, without compromise! The ideal tool for every application from big live events to fixed installations, where versatility means huge savings. The perfect tool at last for the most demanding lighting designers.



## SPECIFICATIONS

- Multifunctional light
- 1400W Osram discharge lamp
- 6500 K output color temperature
- High quality of light
- 180 mm Ø front lens
- 5°- 55° linear zoom
- Focus tracking system
- CMY System + Linear CTO
- 7-color wheel
- Framing system operating on 4 focal planes
- Framing system indexing on 90°
- 6 rotating gobos
- Rotating prism
- Graphic animation wheel
- 16 blades fast Iris
- Variable "soft edge" frost
- Variable flood frost
- Very precise 0-100% dimmer
- Fast stop/strobe effect
- Light can be run at 1400W or 1200W
- Art-Net / RDM

## WEIGHT AND DIMENSIONS

■ 42 Kg (92.6 lbs)  
 mm (LxWxH): 410 x 442 x 804  
 inches (LxWxH): 16.14 x 17.4 x 31.65

# SCENIUS UN1CO

- Multifunctional light • 1400W Osram discharge lamp (6500 K)
- High CRI • 180 mm Ø front lens • 5°- 55° linear zoom • CMY System + Linear CTO + 7-color wheel

SPOT	WASH	BEAM	PROFILE
• 6 rotating gobos	• Uniform light distribution	• Super-concentrated light	• 4 focal planes framing system
• Rotating 4-facet prism	• 55° max beam opening	• Narrow and fat parallel beam	• Framing system rotation on 90°
• Graphic animation wheel	• Variable frost system	• 5° minimum angle	• 16 blades fast iris



**MAKING IMPOSSIBLE POSSIBLE**  
**ALL IN ONE**



CLAY PAKY S.p.A. - I - 24068 Seriate (BG) - Via Pastrengo, 3/b  
 Phone +39 035 654311 - Fax +39 035 301876  
 www.claypaky.it - info@claypaky.it

Follow us on:

